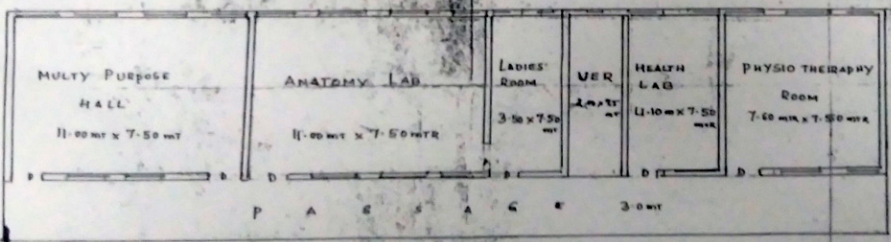
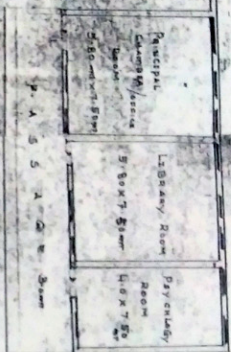
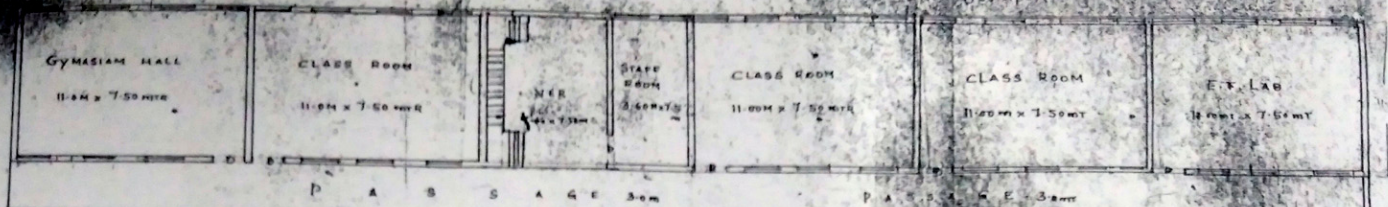


SHRI: PADMARAJ D.P. ED. COLLEGE SINDHURJI GUNSE DIST. BELGAUR



SCALE: 1CM: 1m/5



GROUND FLOOR
 BUILT UP AREA: 7,678 Sq Feet
 OR 715.26 Sq mtr
 FIRST FLOOR
 BUILT UP AREA: 3,866 Sq Feet
 OR 357.34 Sq mtr

MURUGAN P. MURKUN
 Civil Engineering
 CIVIL CONSTRUCTIONS
 TAN. NO. 31
 Behind I.B. Near Uthappa
 SINDHURJI, Gunse, Belgaur



I hereby certify that the above
 mentioned plan is correct and true
 and I am not aware of any
 other person who is not mentioned
 in the plan and report.

Lower Floor
 Upper Floor
 General Floor